

# M-FLEX CAN BRIDGE MODULE

The M-Flex CAN Bridge is a two-channel CANbus bridge for interconnecting two CANbus networks, and is built to withstand the harsh temperatures, shock and vibration, moisture and electrical transients that are common to these environments.



M-Flex CAN Bridge Modules are typically used for construction, agriculture and turf care equipment, utility and power sports vehicles, marine, military, outdoor power equipment and similar harsh environment applications.



## FEATURES

- Two CANbus channels for bridging between two networks.
- Designed for 12V and 24V applications.
- Operate as a bridge and node simultaneously.
- Each channel configurable for 250kbps, 500kbps, and 1Mbps.
- Each channel has 20 filters to pass or block messages based on the entire CAN ID, J1939 PGN or J1939 Source Address.
- SAE J1939 compliant, Standard and Extended Identifier.
- Configurable using M-Flex CAN Bridge User Interface software.
- Two diagnostic LED's for CAN bus communication status.
- Beacon indicator for identifying Bridge module when multiple bridges used on a network.
- Designed for severe duty, outdoor mobile applications.
- Wide Operating Temperature from -40C to 85C.
- Deutsch DT style connector.
- Space Saving & Easy Installation.
- IP67 submersion and IP69K pressure wash rated (>15° nozzle and with appropriate boot).
- RoHS compliant.

## SPECIFICATIONS

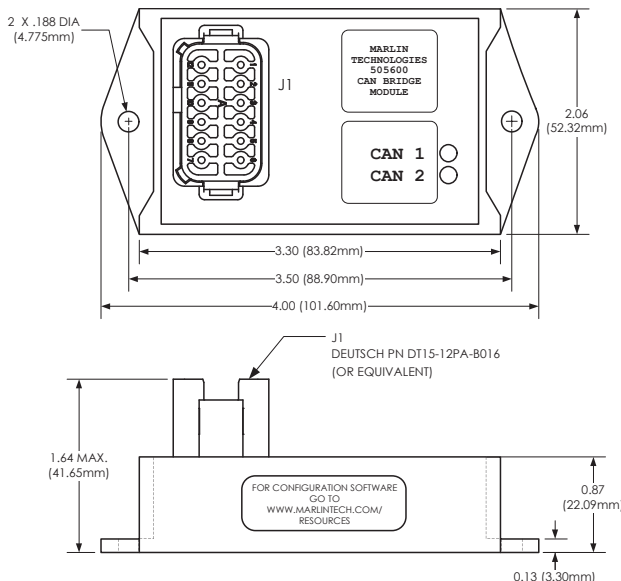
Specifications subject to change without notice. \ Revised 04.23

<b>Supply Voltage</b>	9-36VDC operating range (12VDC or 24VDC nominal) with reverse polarity protection.
<b>Protocol</b>	SAE J1939 CAN 2.0A and 2.0B compliant, CAN Open, NMEA 2000.
<b>Baud Rate</b>	250/500/1000 Kbps with auto detection.
<b>CAN Channels</b>	2 Channel bridge for connecting 2 CANbus networks.
<b>Configuration Interface</b>	M-Flex CAN Bridge User Interface software via CAN bus.
<b>Enclosure</b>	Noryl plastic enclosure measuring 2.0W x 3.0L (plus flanges) x 0.87H.
<b>Connector</b>	Deutsch DT15-12PA-B016.
<b>Mounting</b>	Screw Mount M4/M4.5/8-32 Screws.

## CONNECTIONS

<b>J1-1</b> ..... Power	<b>J1-7</b> ..... Channel 2 CANL
<b>J1-2</b> ..... Channel 1 CANH	<b>J1-8</b> ..... Channel 2 CANL
<b>J1-3</b> ..... Channel 1 CANH	<b>J1-9</b> ..... Channel 2 CANH
<b>J1-4</b> ..... Channel 1 CANL	<b>J1-10</b> ..... Channel 2 CANH
<b>J1-5</b> ..... Channel 1 CANL	<b>J1-11</b> ..... Channel 2 CAN Shield
<b>J1-6</b> ..... Channel 1 CAN Shield	<b>J1-12</b> ..... Ground

## DIMENSIONS



For a detailed specification visit [marlintech.com/m-flex](http://marlintech.com/m-flex)

Marlin Technologies, Inc.  
 101 Industrial Drive \ P.O. Box 123  
 Horicon, WI 53032-1803  
 920.485.4463 \ P  
 920.485.2899 \ F

**MARLINTECH.COM**

Made in the USA with Imported Materials