

M-FLEX CAN BRIDGE MODULE

The M-Flex CAN Bridge is a two-channel CANbus bridge for interconnecting two CANbus networks, and is built to withstand the harsh temperatures, shock and vibration, moisture and electrical transients that are common to these environments.



M-Flex CAN Bridge Modules are typically used for construction, agriculture and turf care equipment, utility and power sports vehicles, marine, military, outdoor power equipment and similar harsh environment applications.



FEATURES

- Two CANbus channels for bridging between two networks.
- Designed for 12V and 24V applications.
- Operate as a bridge and node simultaneously.
- Each channel configurable for 250kbps, 500kbps, and 1Mbps.
- Each channel has 20 filters to pass or block messages based on the entire CAN ID, J1939 PGN or J1939 Source Address.
- SAE J1939 compliant, Standard and Extended Identifier.
- Configurable using M-Flex CAN Bridge User Interface software.
- Two diagnostic LED's for CAN bus communication status.
- Beacon indicator for identifying Bridge module when multiple bridges used on a network.
- Designed for severe duty, outdoor mobile applications.
- Wide Operating Temperature from -40C to 85C.
- Deutsch DT style connector.
- Space Saving & Easy Installation.
- IP67 submersion and IP69K pressure wash rated (>15° nozzle and with appropriate boot).
- RoHS and CE compliant.

SPECIFICATIONS

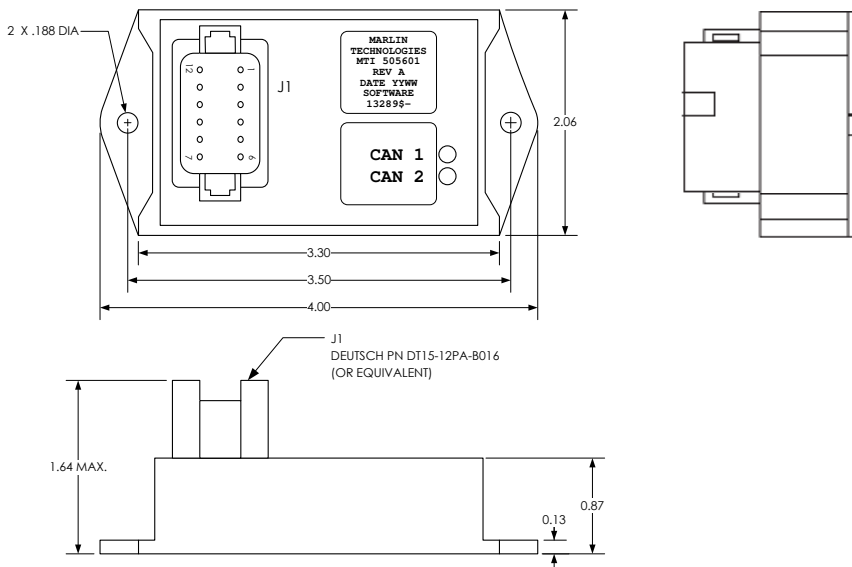
Specifications subject to change without notice. \ Revised 11.19

Supply Voltage	9-36VDC operating range (12VDC or 24VDC nominal) with reverse polarity protection.
Protocol	SAE J1939 CAN 2.0A and 2.0B compliant, CAN Open, NMEA 2000.
Baud Rate	250/500/1000 Kbps with auto detection.
CAN Channels	2 Channel bridge for connecting 2 CANbus networks.
Configuration Interface	M-Flex CAN Bridge User Interface software via CAN bus.
Enclosure	Noryl plastic enclosure measuring 2.0W x 3.0L (plus flanges) x 0.87H.
Connector	Deutsch DT15-12PA-B016.
Mounting	Screw Mount M4/M4.5/8-32 Screws.

CONNECTIONS

J1-1 Power	J1-7 Channel 2 CANL
J1-2 Channel 1 CANH	J1-8 Channel 2 CANL
J1-3 Channel 1 CANH	J1-9 Channel 2 CANH
J1-4 Channel 1 CANL	J1-10 Channel 2 CANH
J1-5 Channel 1 CANL	J1-11 Channel 2 CAN Shield
J1-6 Channel 1 CAN Shield	J1-12 Ground

DIMENSIONS



For a detailed specification visit
marlintech.com/m-flex

Marlin Technologies, Inc.
 101 Industrial Drive \ P.O. Box 123
 Horicon, WI 53032-1803
 920.485.4463 \ P
 920.485.2899 \ F

MARLINTECH.COM
 PROUDLY MADE IN THE USA